

33. Groovy

linen vest

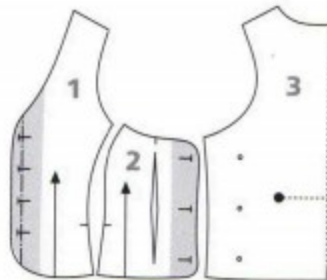
128-134-140-146-152-158-164-170 cm

Pages 62-63



MATERIALS

- 45-50-50-50-55-55-60-60 cm brown linen chambray (LI) for shell
- 45-50-50-50-55-55-60-60 cm brown lightweight cotton fabric for lining
- 30 cm interfacing, Vlieseline H 180
- 10 colorful buttons, ø 20 mm
- elastic thread (suitable for bobbin thread)



PATTERN PIECES

cut

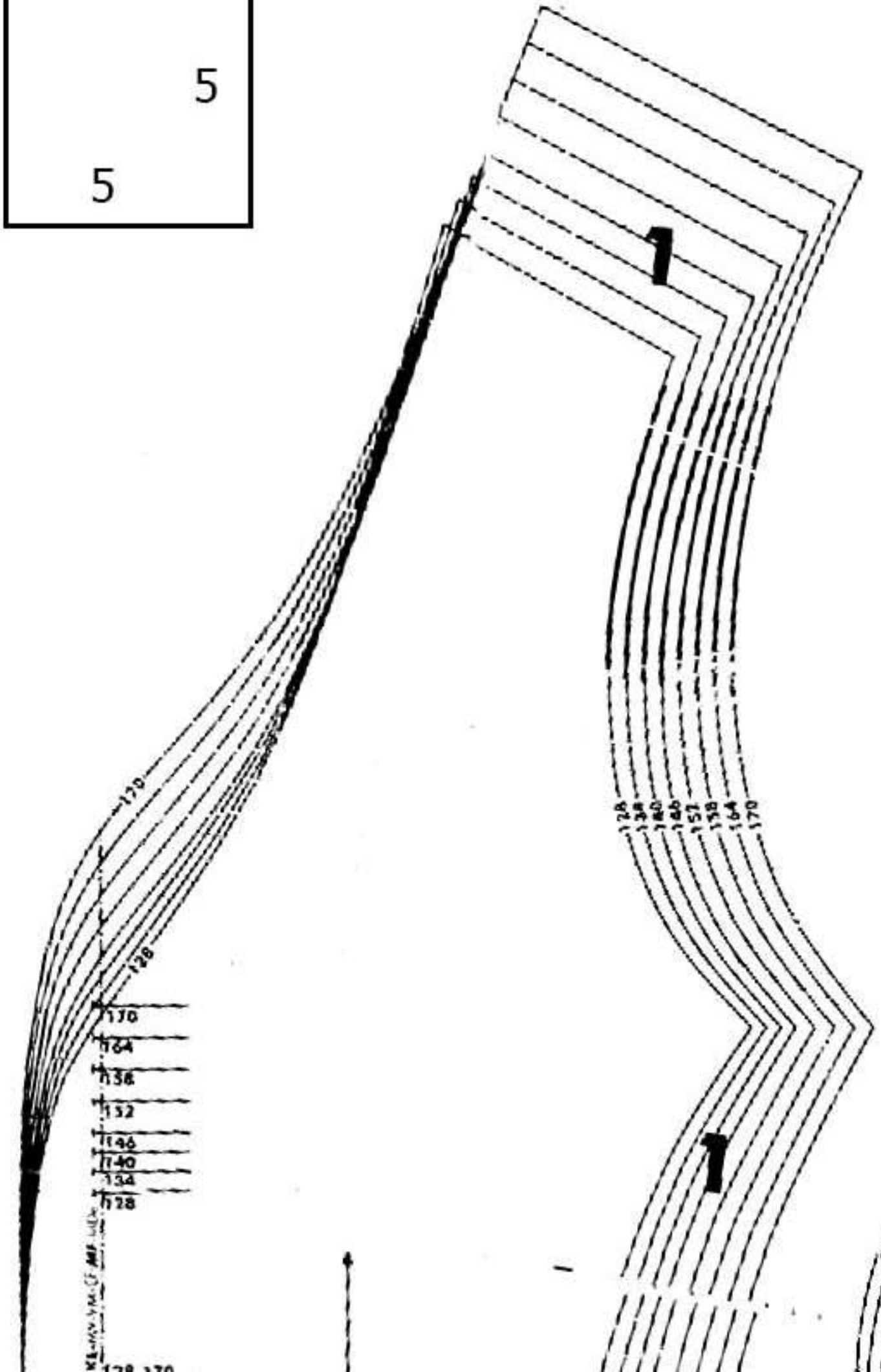
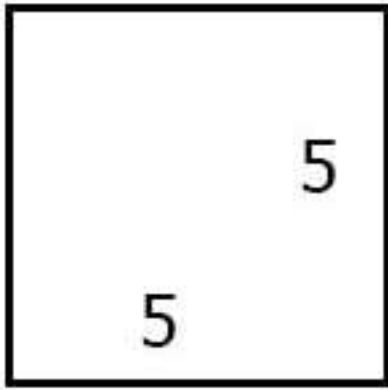
	Shell	Lining
1 front panel	2	2
2 front side panel	2	2
3 back panel	1	1

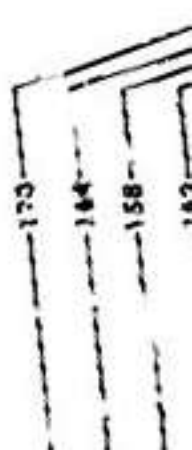
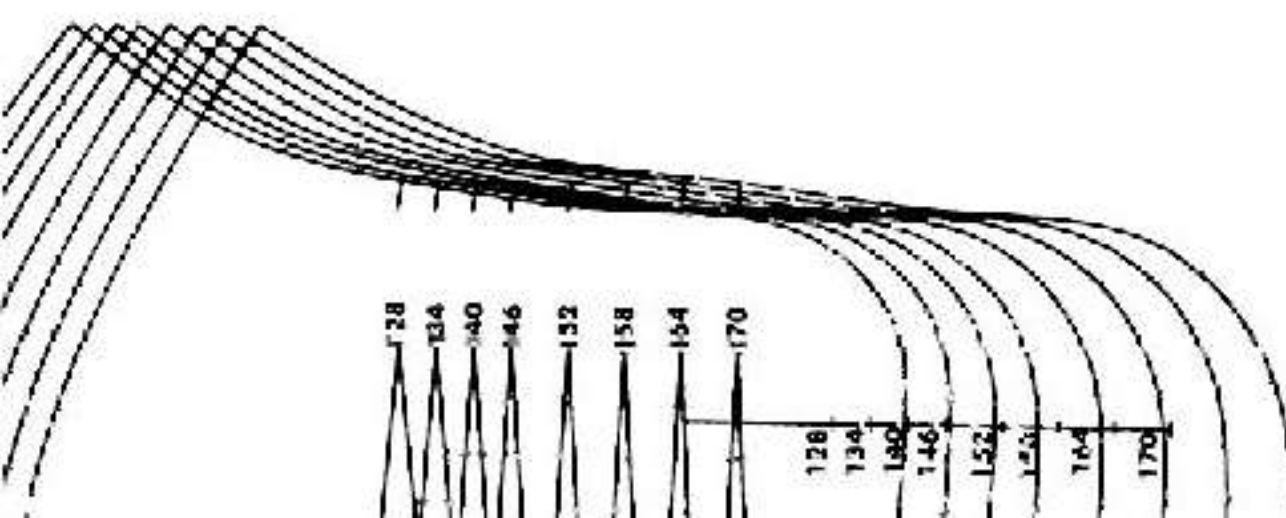
PATTERN SHEET **F** blue

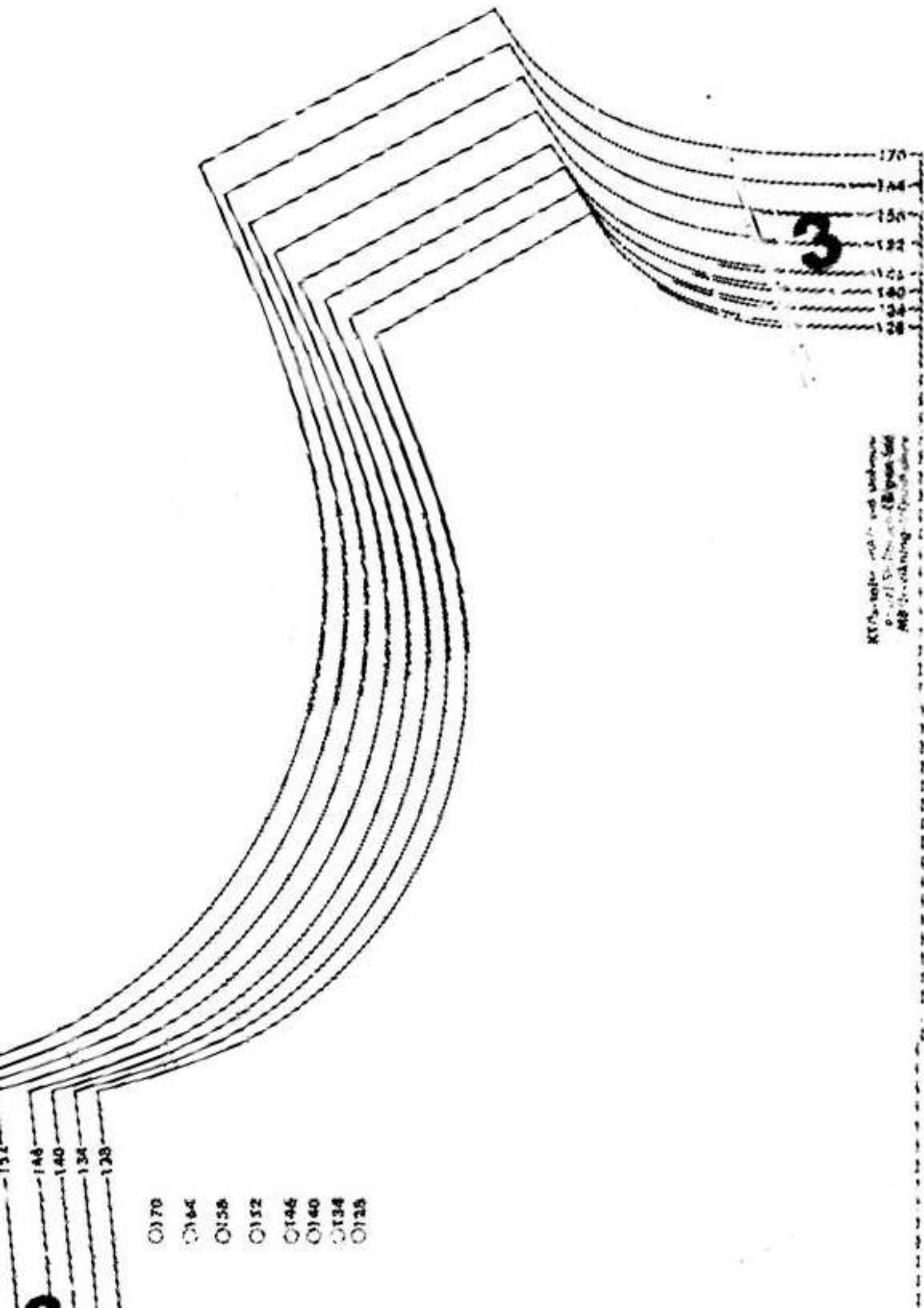
CUTTING

front and front side panel

back panel







- 170
- 164
- 158
- 152
- 146
- 140
- 134
- 128

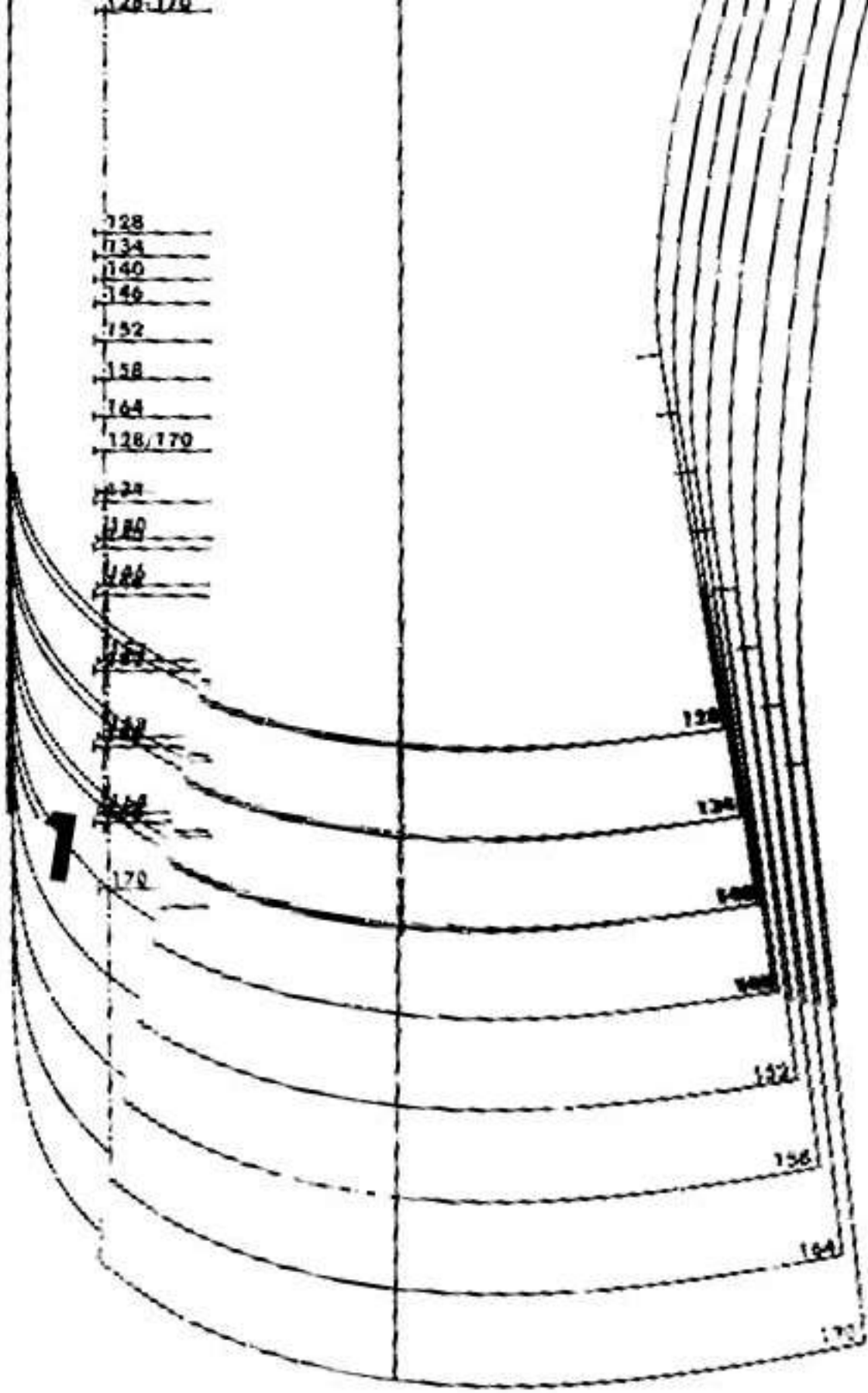
KTA-... mit ...
 ...
 ...

3

132
 146
 140
 134
 128

170
 164
 158
 152
 146
 140
 134
 128



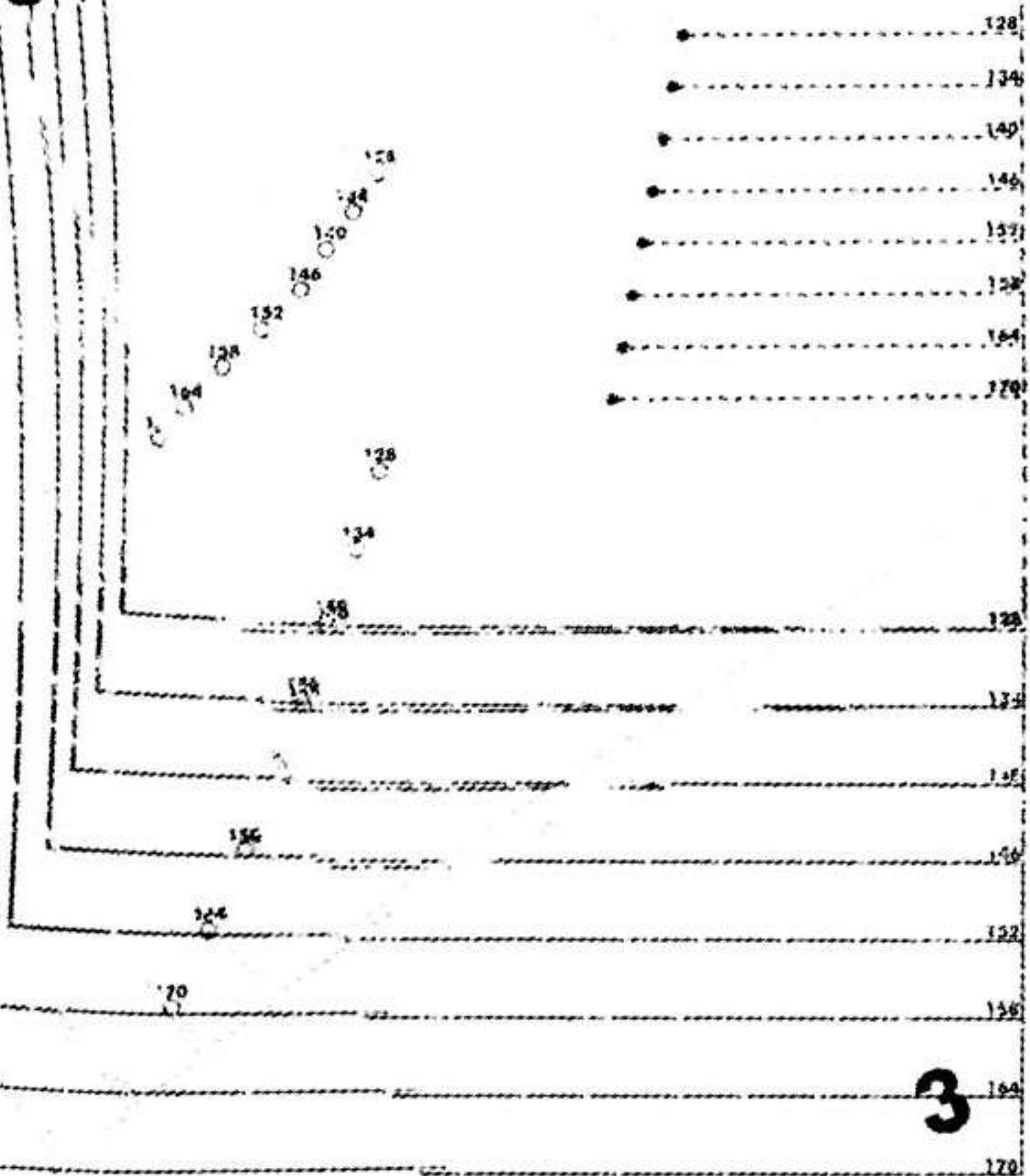




2



3



3

