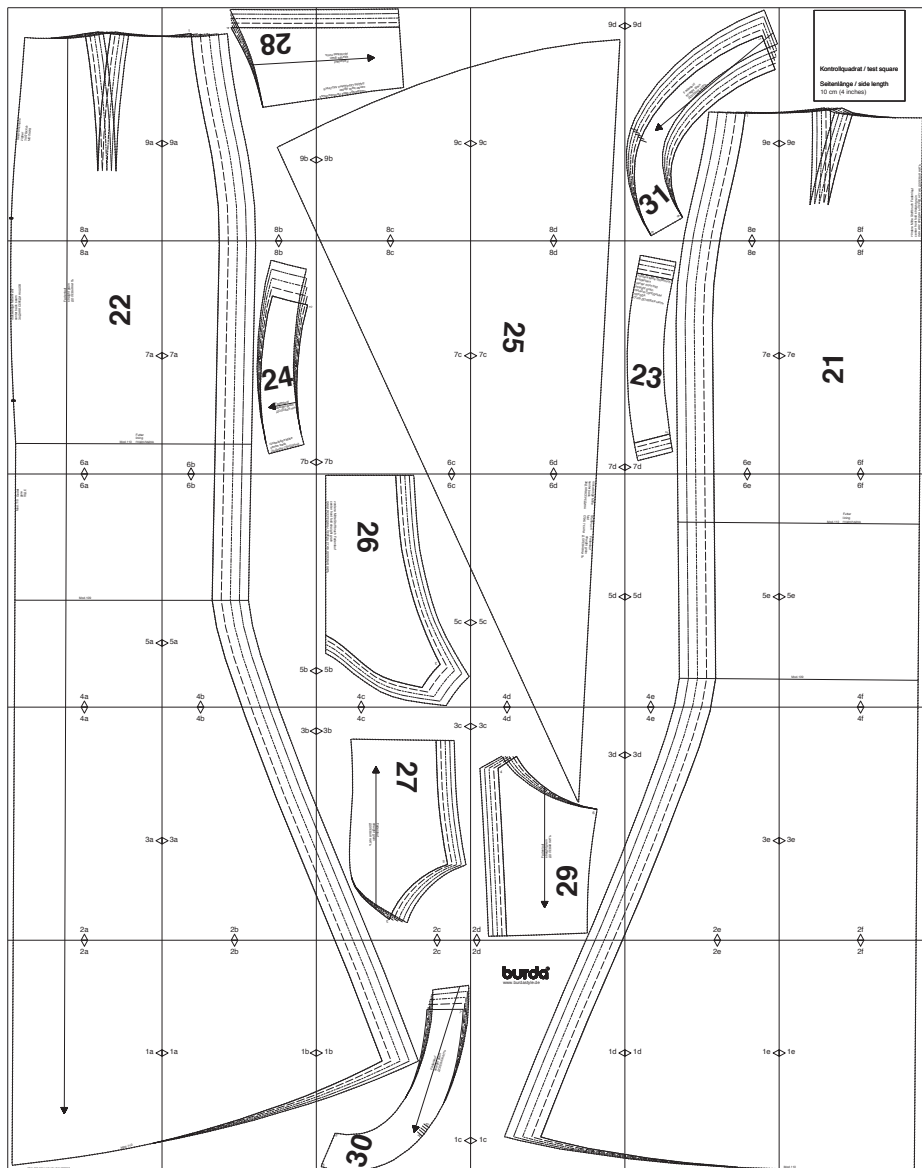


# burda Download-Schnitt

## Modell 109 Burda Style 03/2017



Copyright 2017 by Verlag Aenne Burda GmbH & Co. KG, Hubert-Burda Platz 2, D-77652 Offenburg  
Sämtliche Modelle, Schnittteile und Zeichnungen stehen unter Urheberschutz, gewerbliches Nacharbeiten ist untersagt.  
Der Verlag haftet nicht für Schäden, die durch unsachgemäße Handhabung des Schnitts, der Materialien,  
unsachgemäße Ausführung der Tipps und Anleitungen oder unsachgemäße Nutzung der Modelle entstehen.

2a

1a



Mod.110

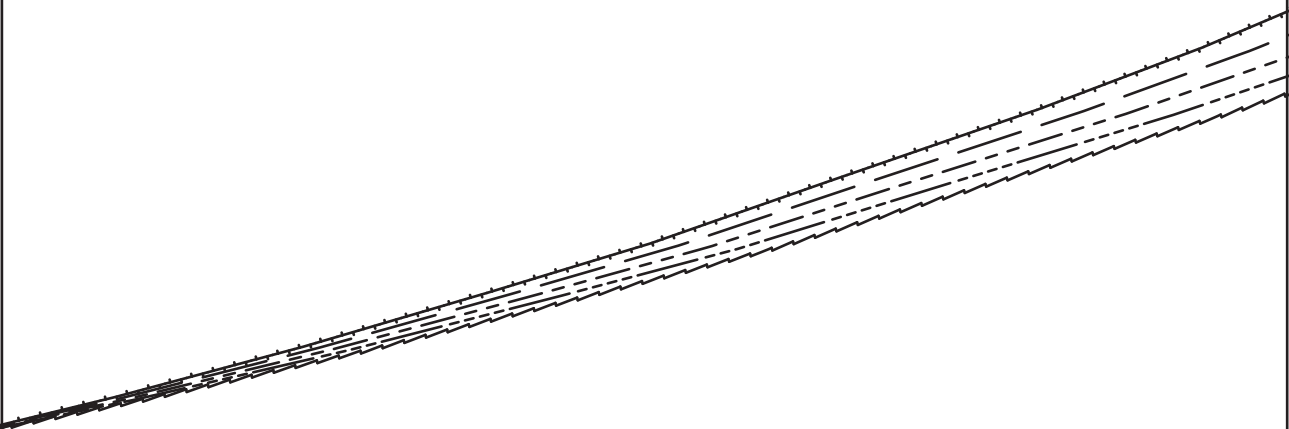
2b



1a



1b



30

5

8

1b

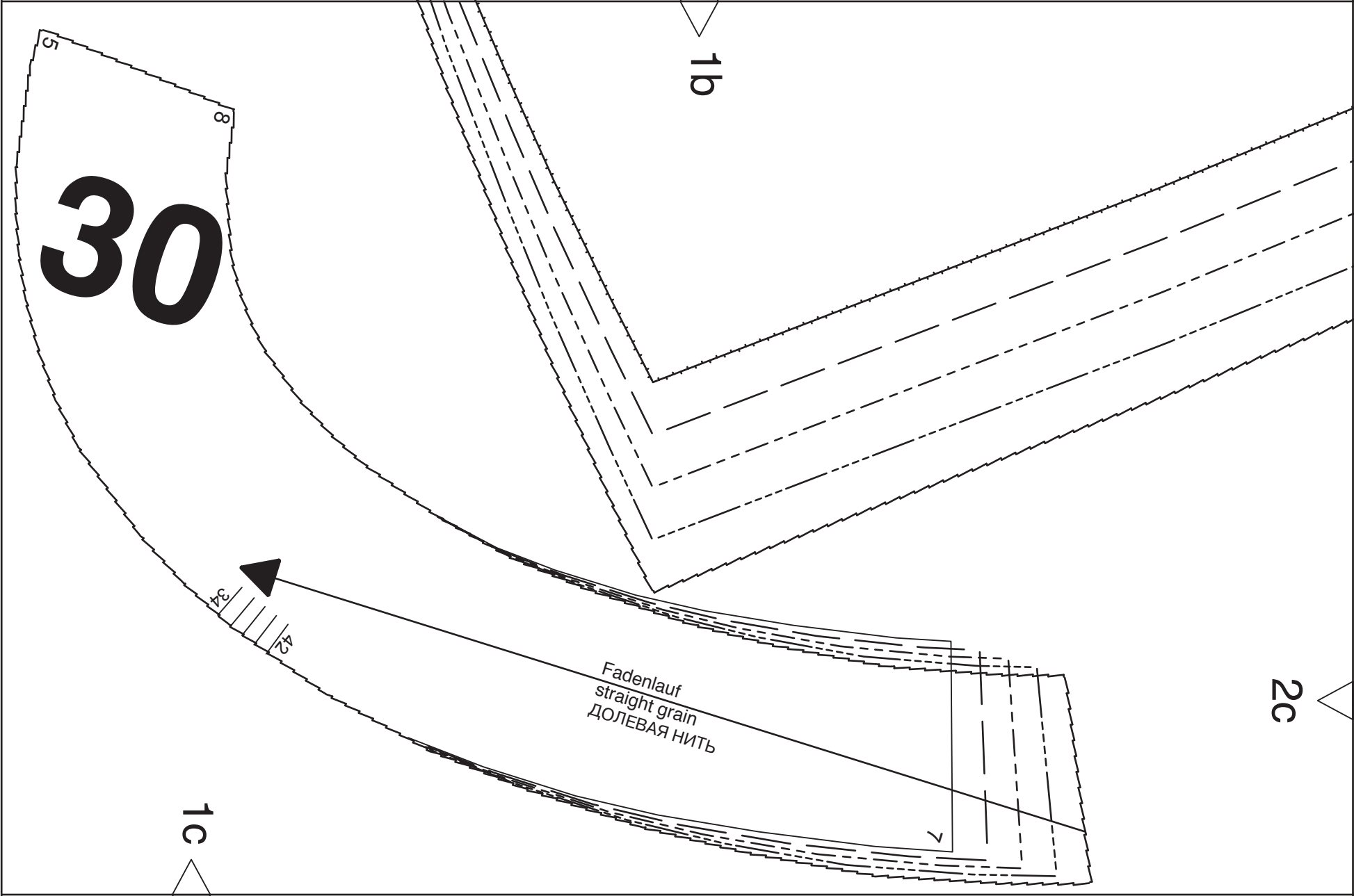
1c

2c

34  
42

Fadenlauf  
straight grain  
ДОЛЕВАЯ НИТЬ

7

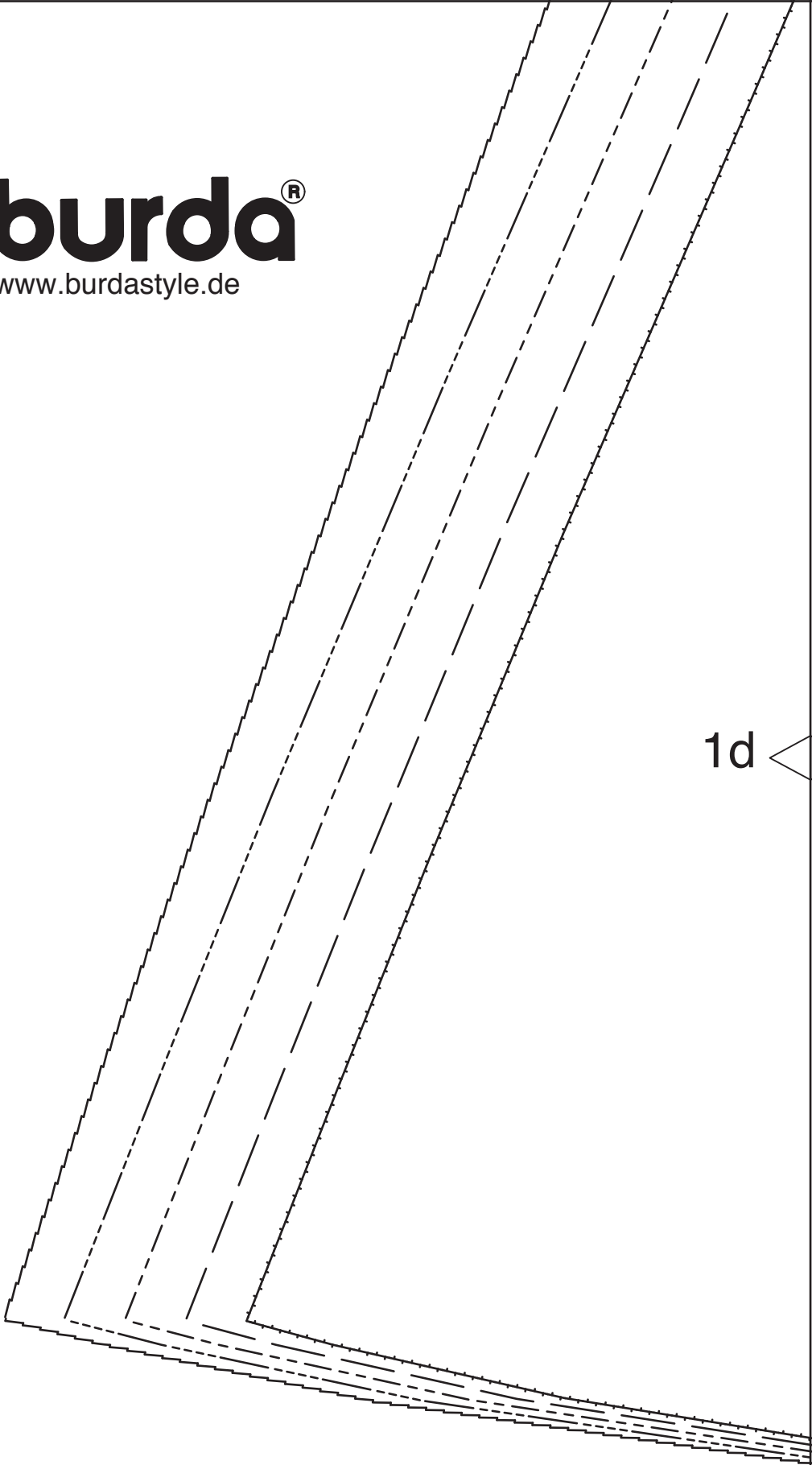


2d

**burda**<sup>®</sup>  
www.burdastyle.de

1d

1c



2e

1d

1e



2f

1e

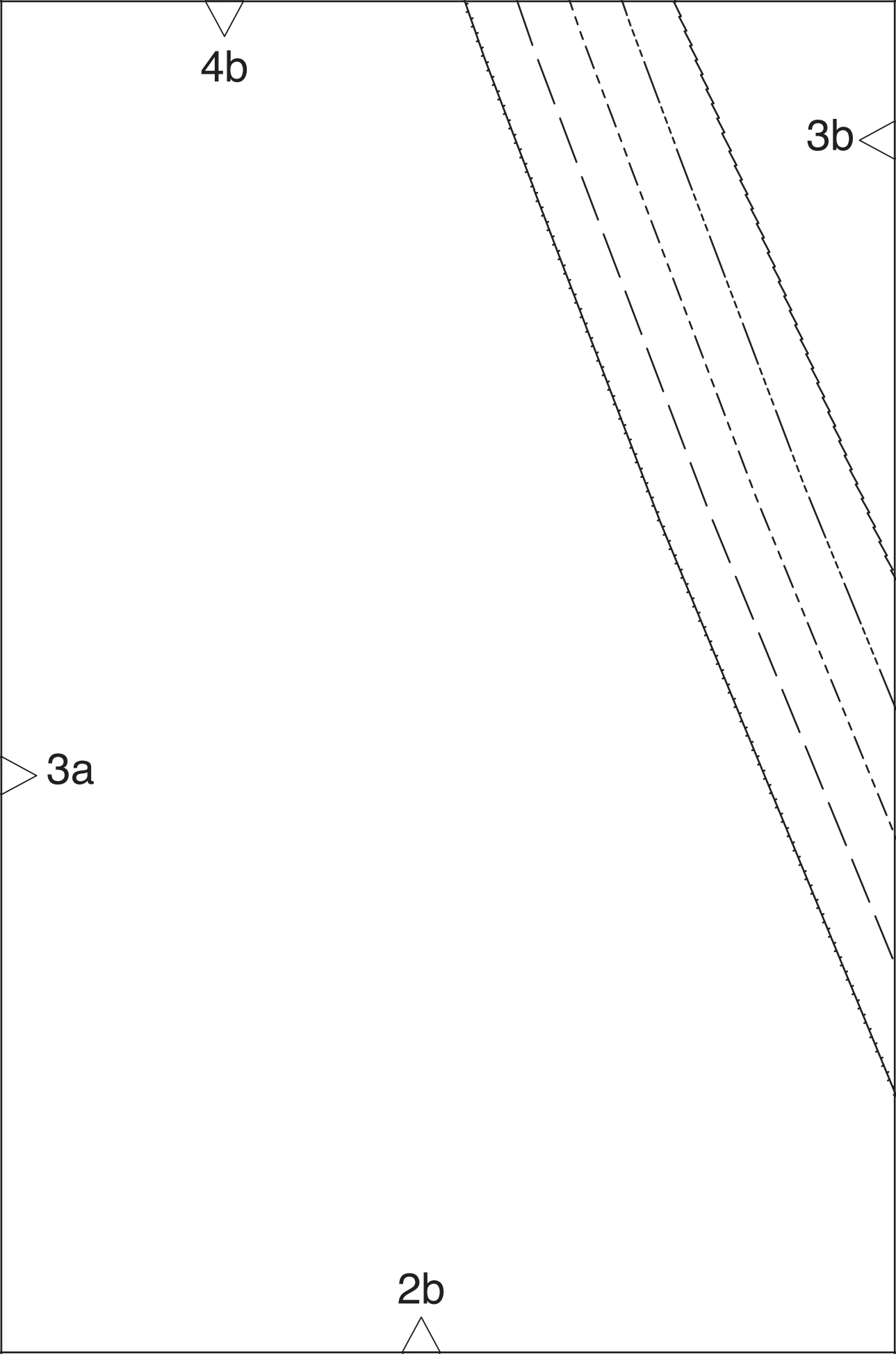
Mod.110

4a

3a

2a



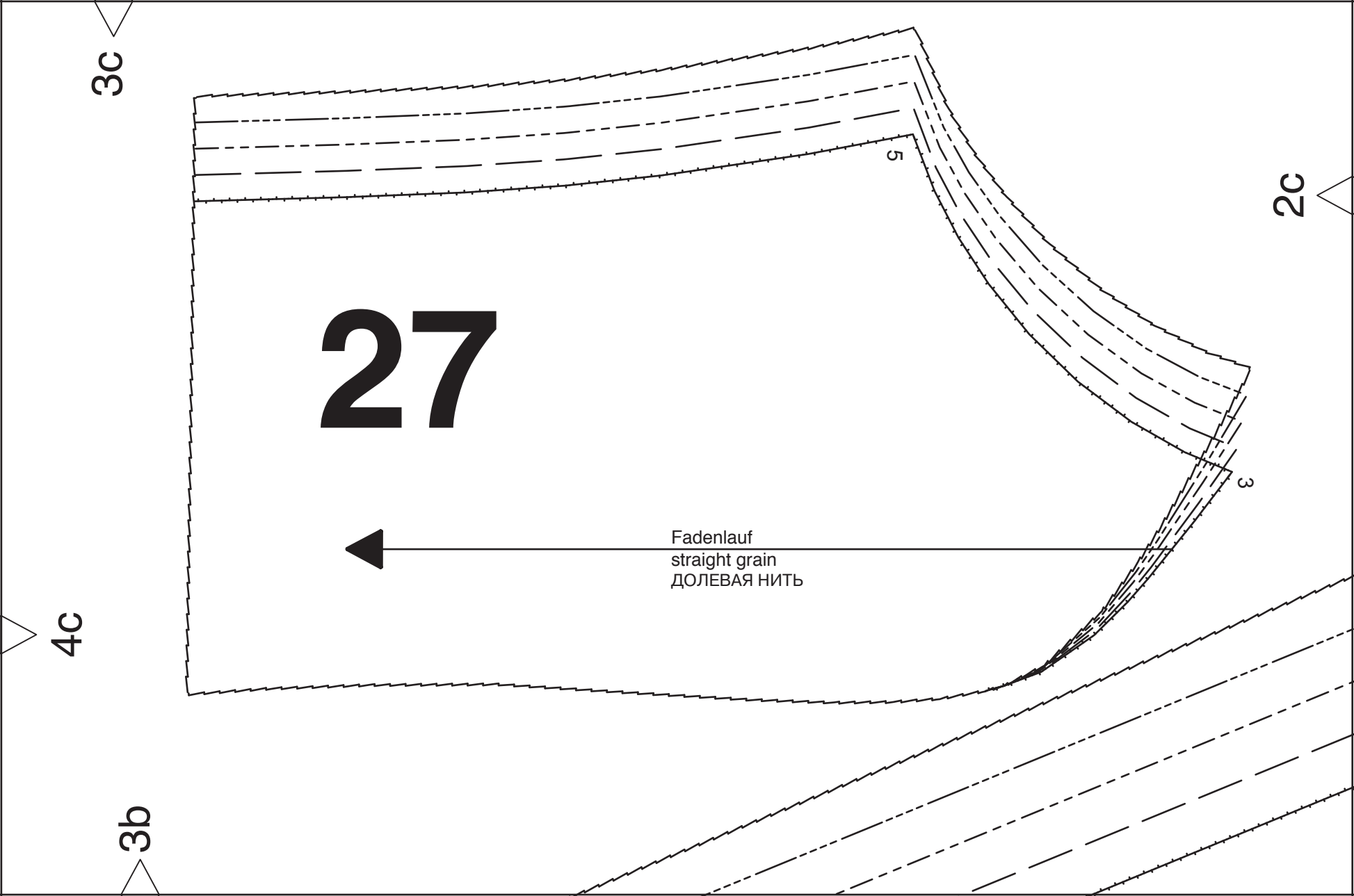


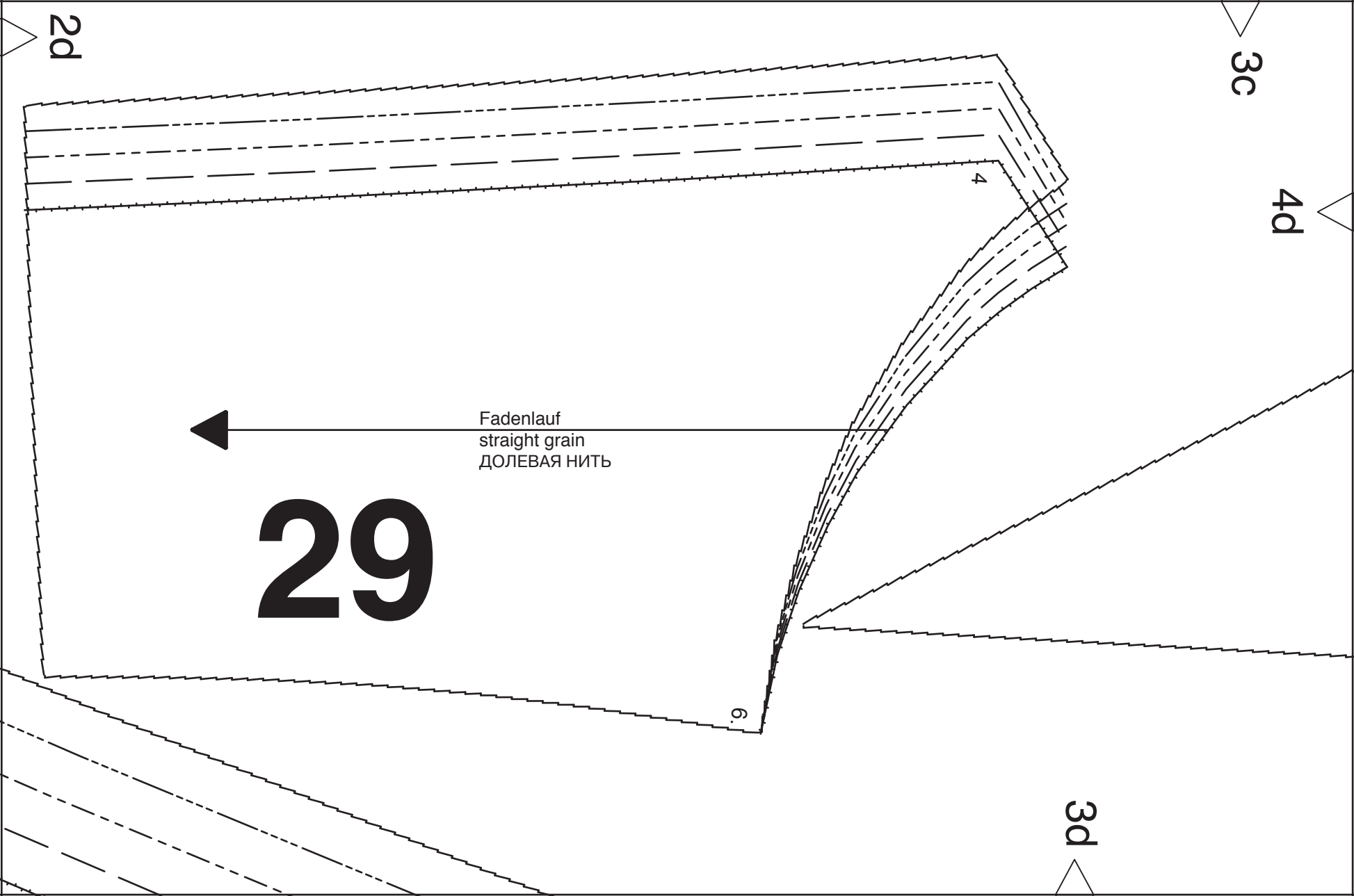
4b

3b

2b

3a





2d

3c

4d



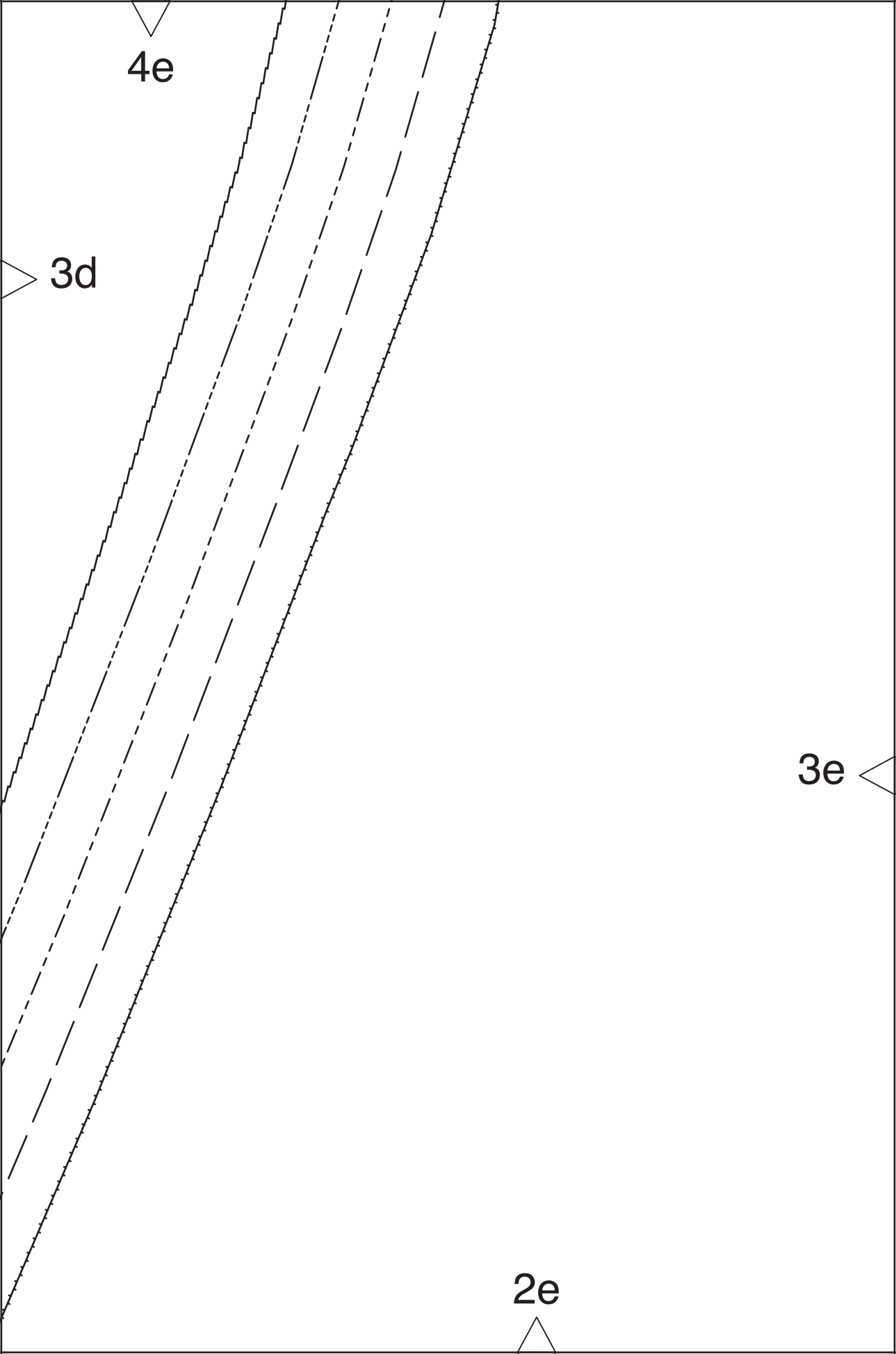
Fadenlauf  
straight grain  
ДОЛЕВАЯ НИТЬ

29

4

6

3d



A diagram of a rectangular frame. The top edge is a solid line with a downward-pointing triangle at its center. The bottom edge is a solid line with an upward-pointing triangle at its center. The left edge is a solid line with a rightward-pointing triangle at its midpoint. The right edge is a dashed line. The labels '4f', '3e', and '2f' are positioned near the top, left, and bottom edges respectively.

4f

3e

2f

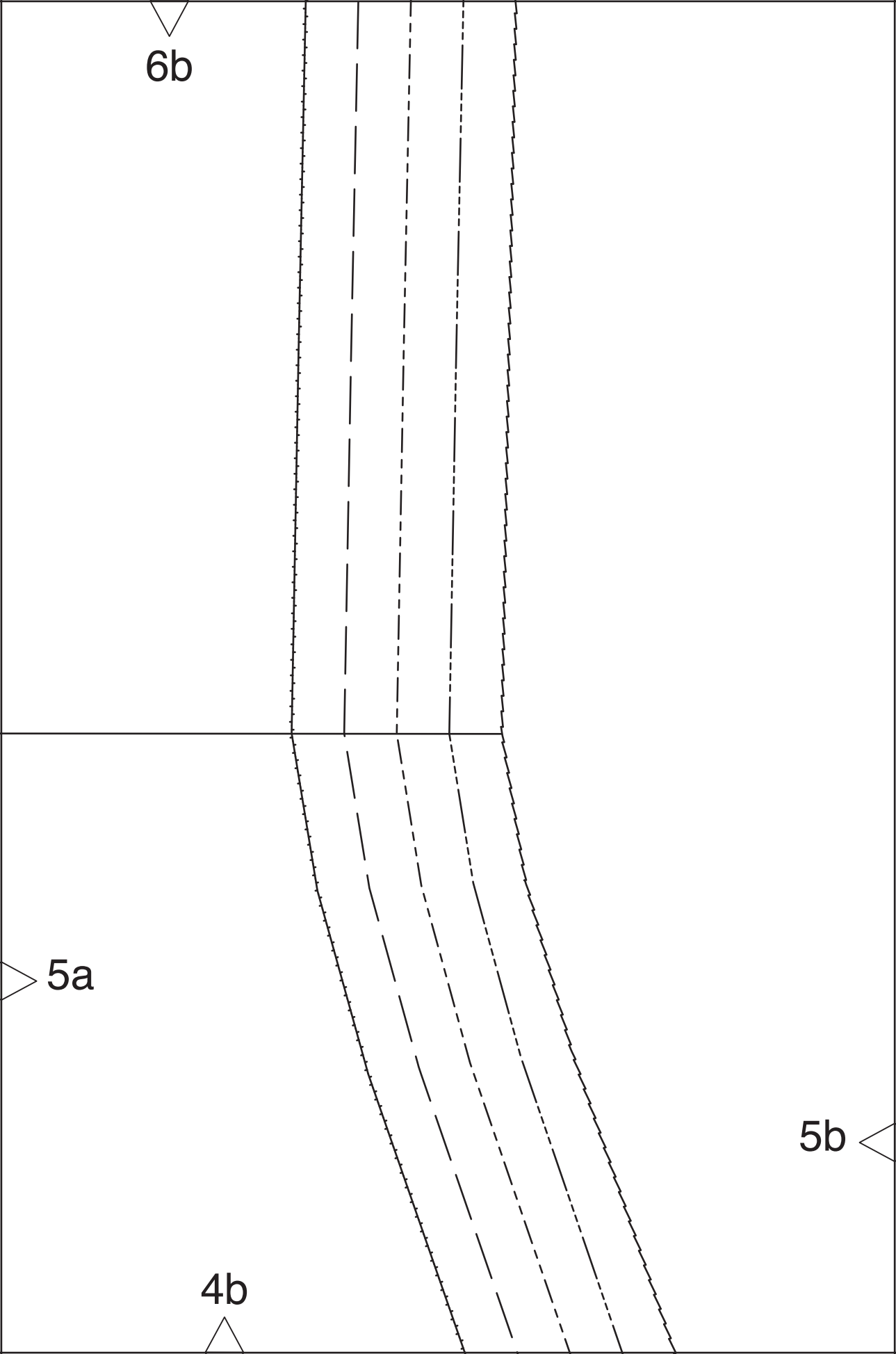
Mod.110 Godet  
gore  
ГОДЕ

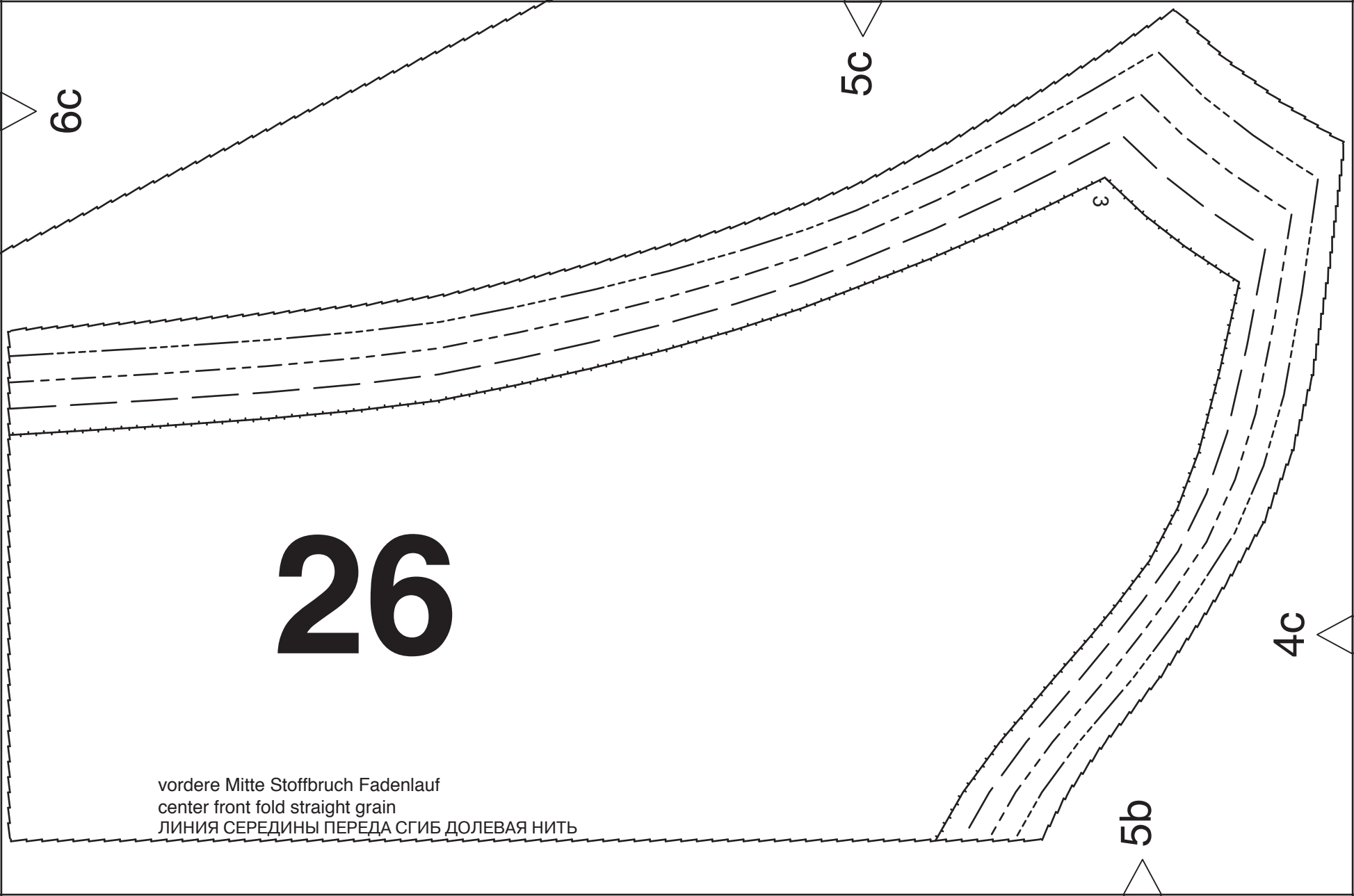
6a

Mod.109

5a

4a





6c

5c

3

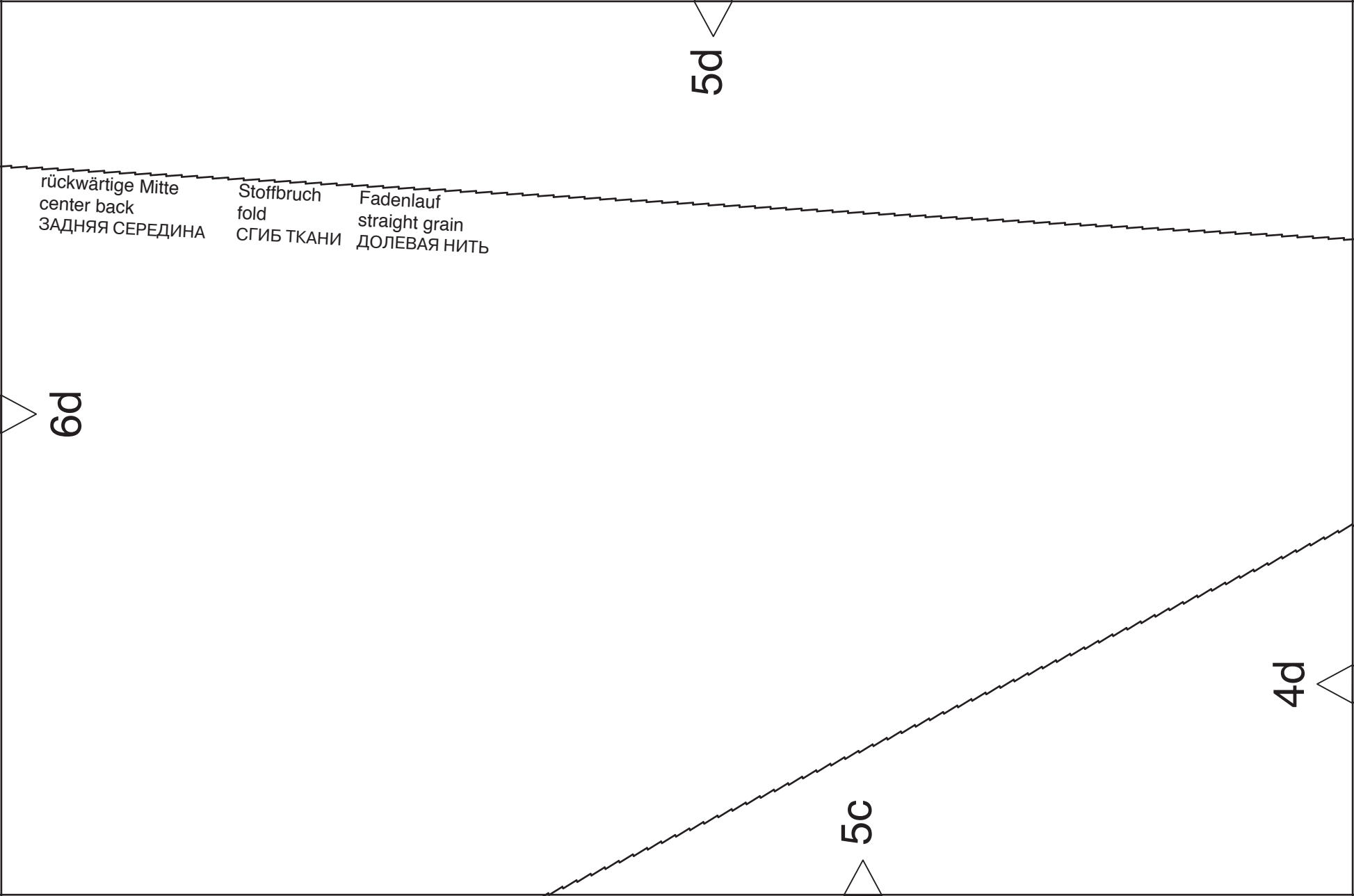
4c

5b

**26**

vordere Mitte Stoffbruch Fadenlauf  
center front fold straight grain  
ЛИНИЯ СЕРЕДИНЫ ПЕРЕДА СГИБ ДОЛЕВАЯ НИТЬ





5d

rückwärtige Mitte  
center back  
ЗАДНЯЯ СЕРЕДИНА

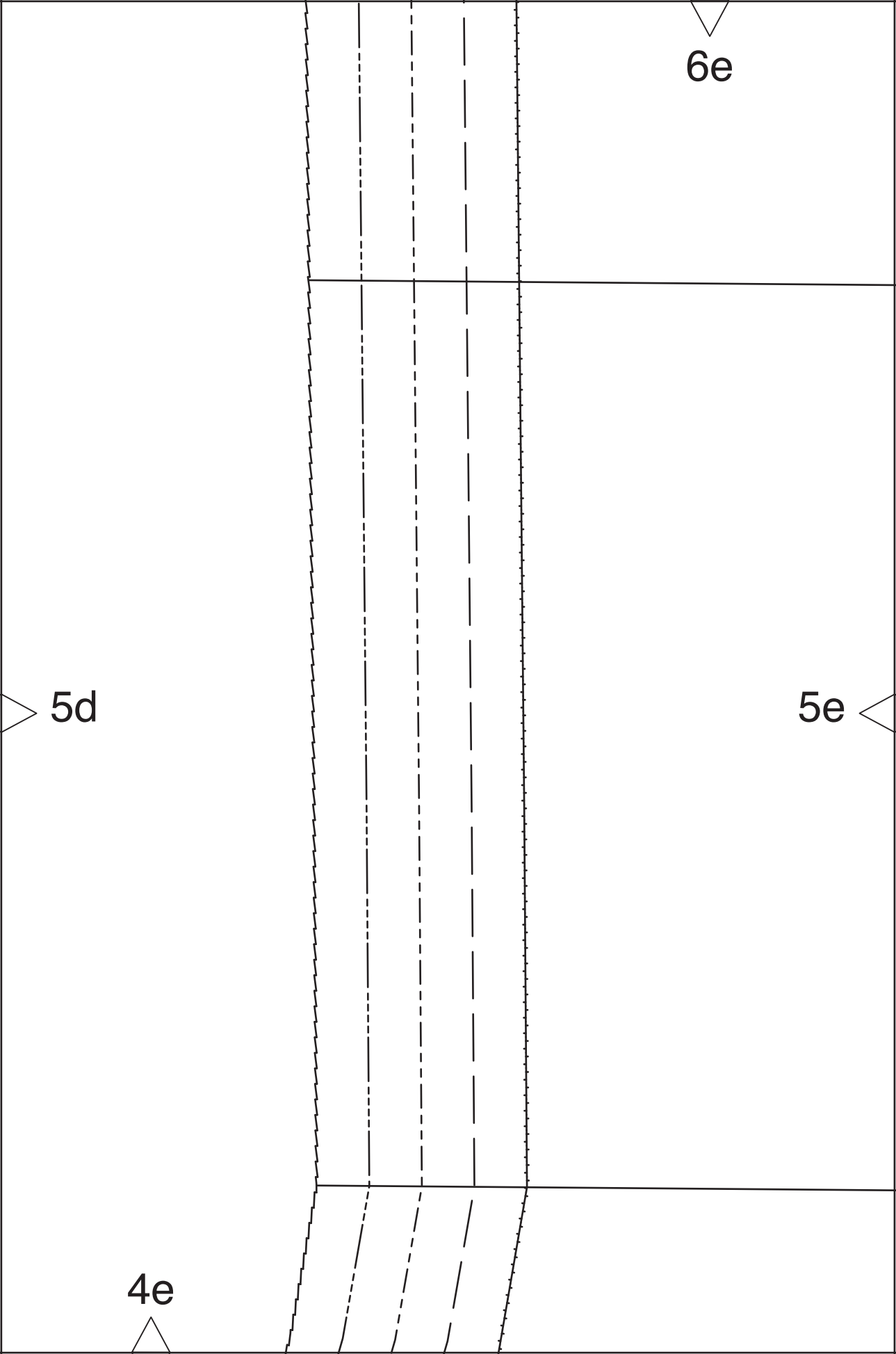
Stoffbruch  
fold  
СГИБ ТКАНИ

Fadenlauf  
straight grain  
ДОЛЕВАЯ НИТЬ

6d

5c

4d



6f

Futter  
lining  
Mod.110 ПОДКЛАДКА

5e

Mod.109

4f

rückwärtige Mitte Naht  
center back seam  
ЗАДНЯЯ СЕРЕДИНА ШОВ

Fadenlauf  
straight grain  
ДОЛЕВАЯ НИТЬ

6a

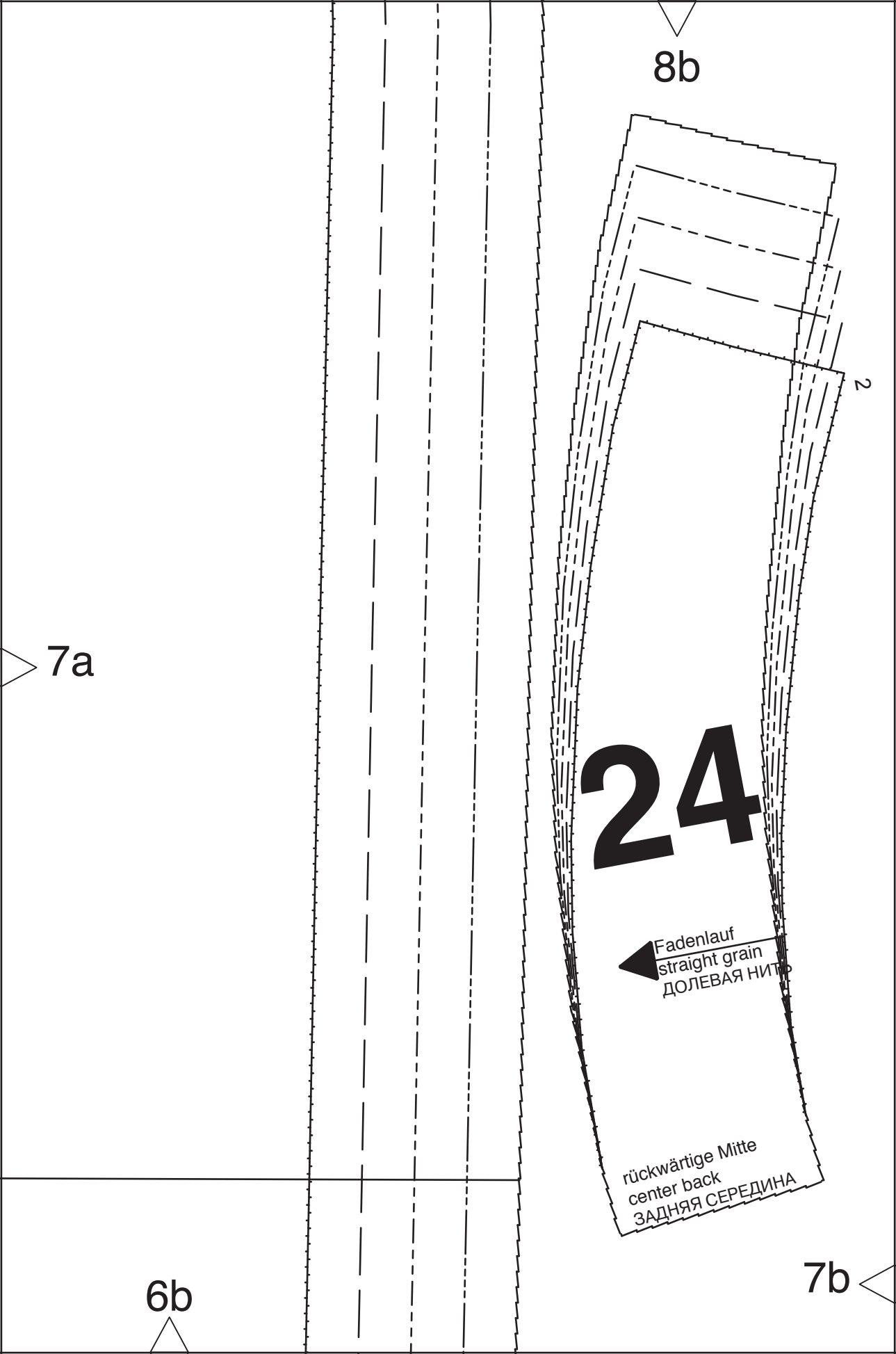
8a

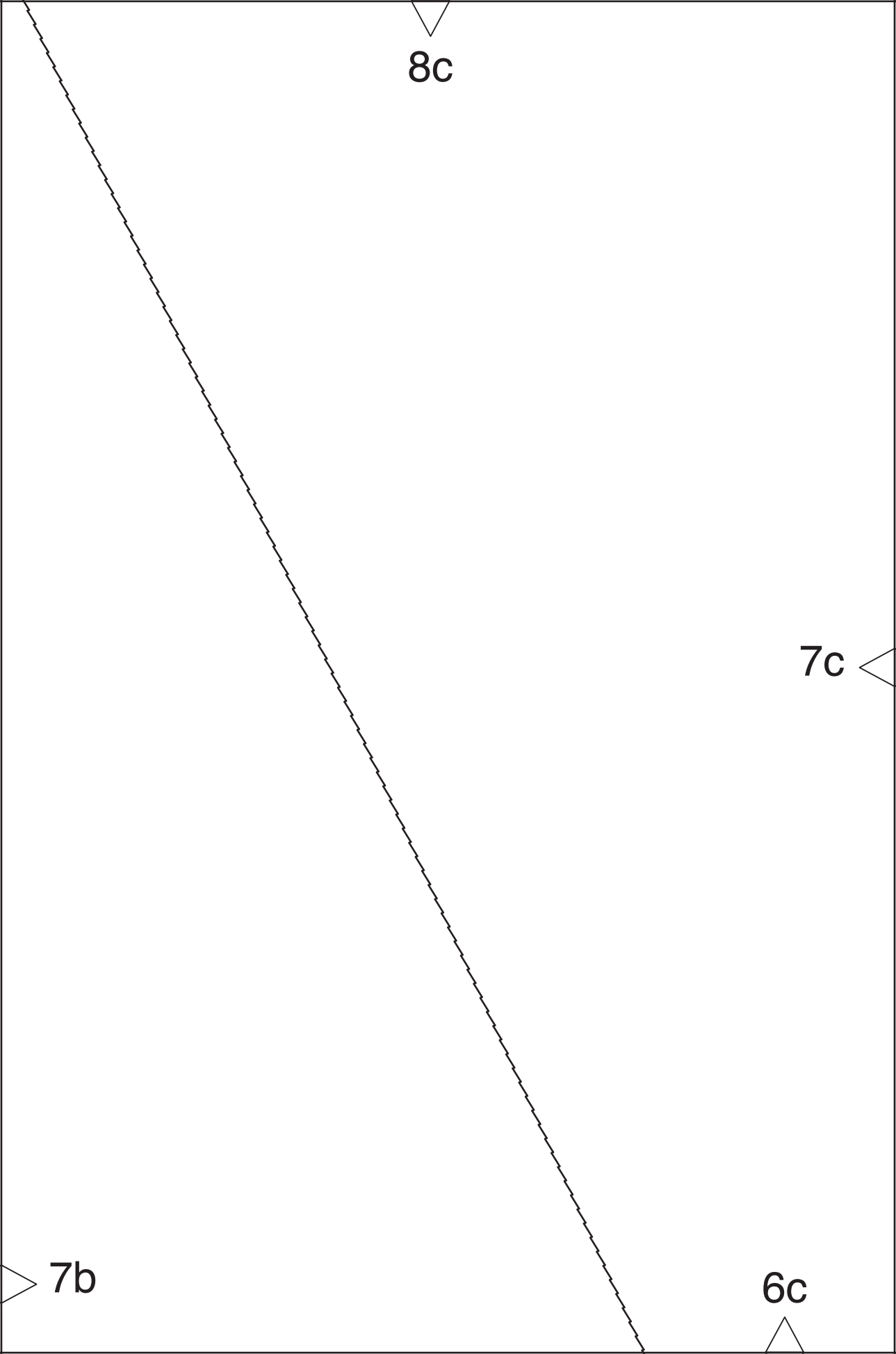
22

7a

Mod. 110  
ПОДКЛАДКА

Futter  
lining  
ПОДКЛАДКА





8d

25

7c

6d

7d

8e

7e

6e

7d

23

vordere Mitte Stoffbruch  
Fadenlauf  
center front fold  
straight grain  
ЛИНИЯ СЕРЕДИНЫ  
ПЕРЕДА  
СГИБ ДОЛЕВАЯ НИТЬ

2



8f

6f

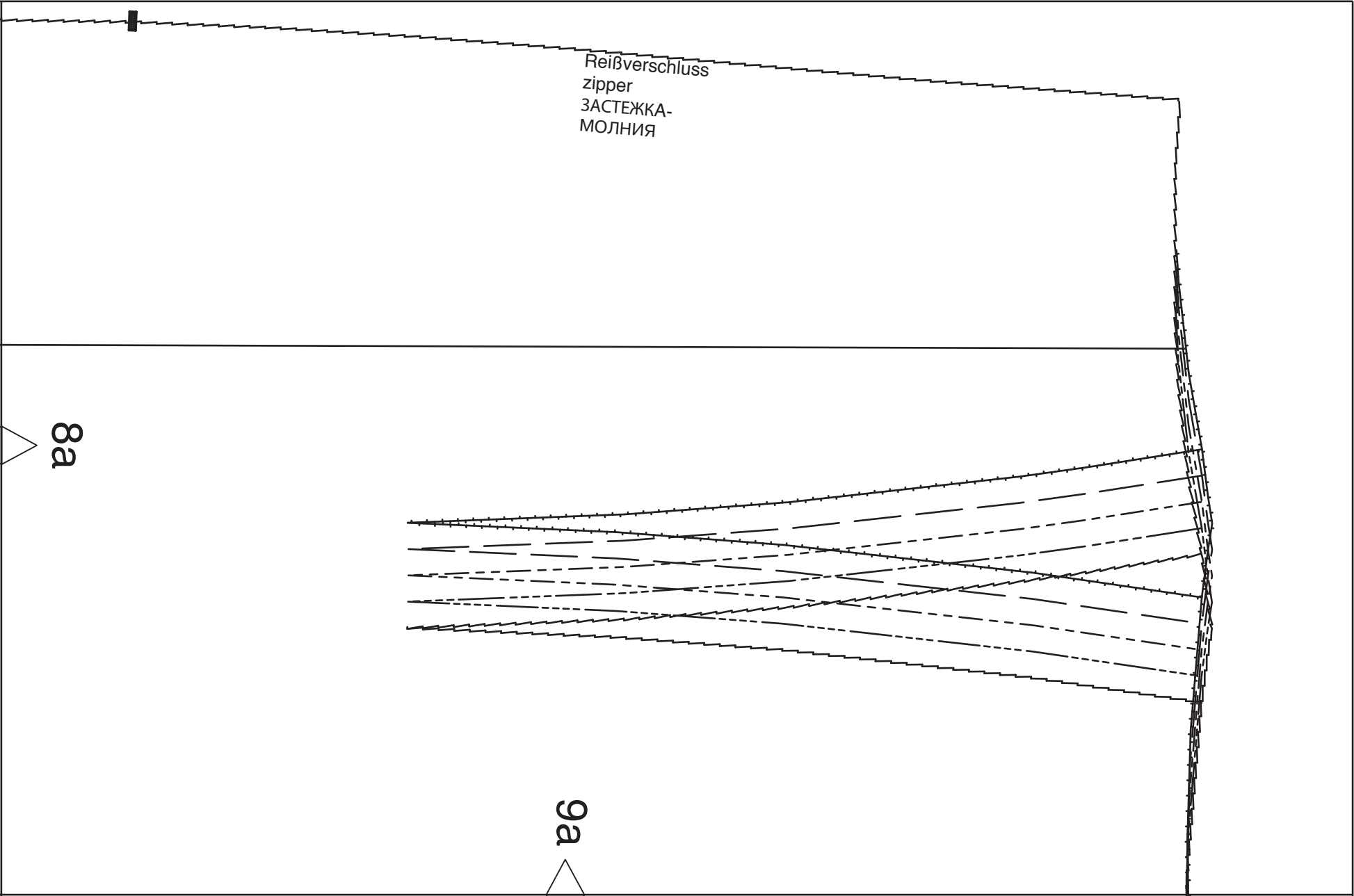
7e

21

Reißverschluss  
zipper  
ЗАСТЕЖКА-  
МОЛНИЯ

8a

9a



28

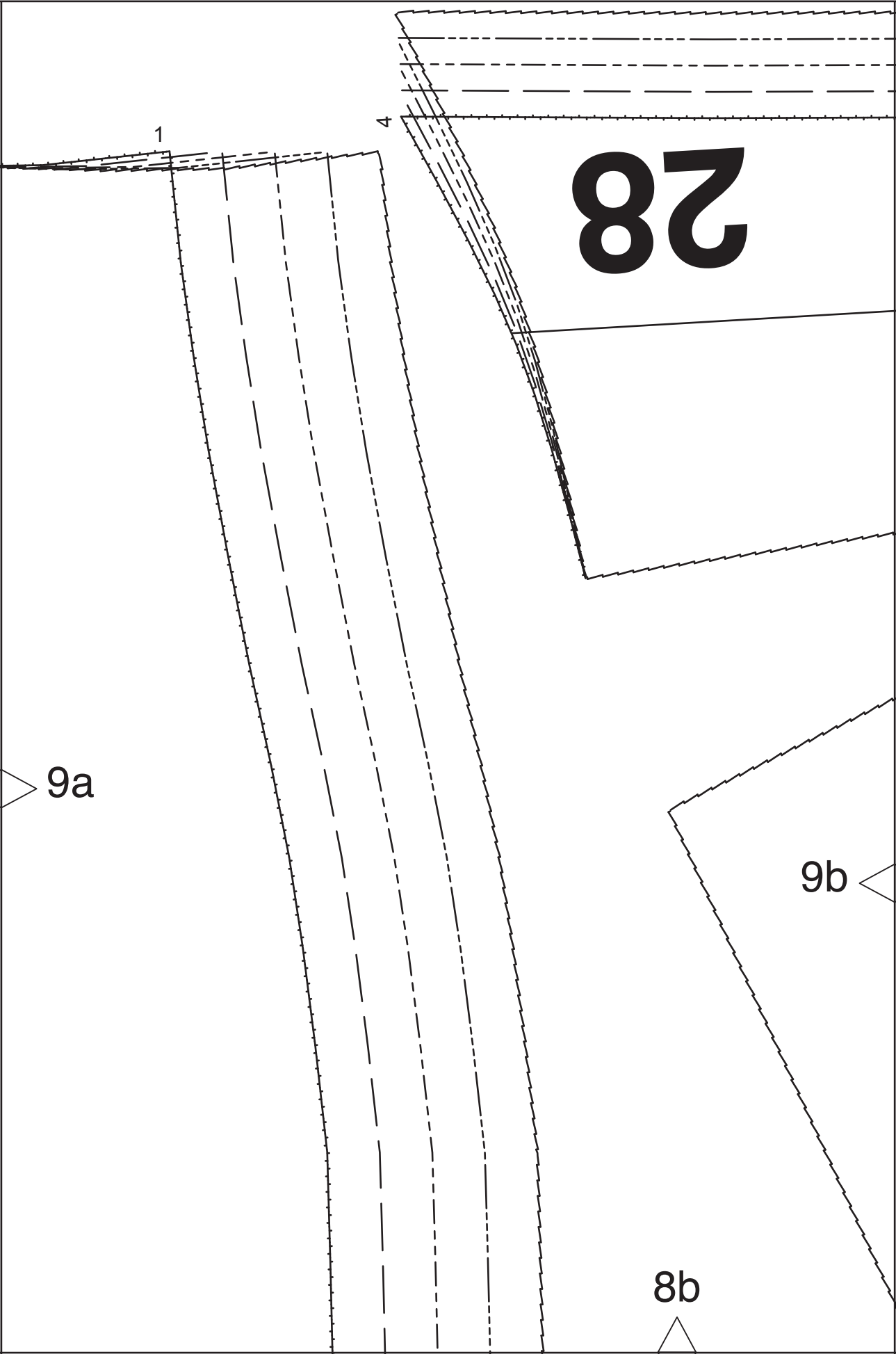
1

4

9a

9b

8b



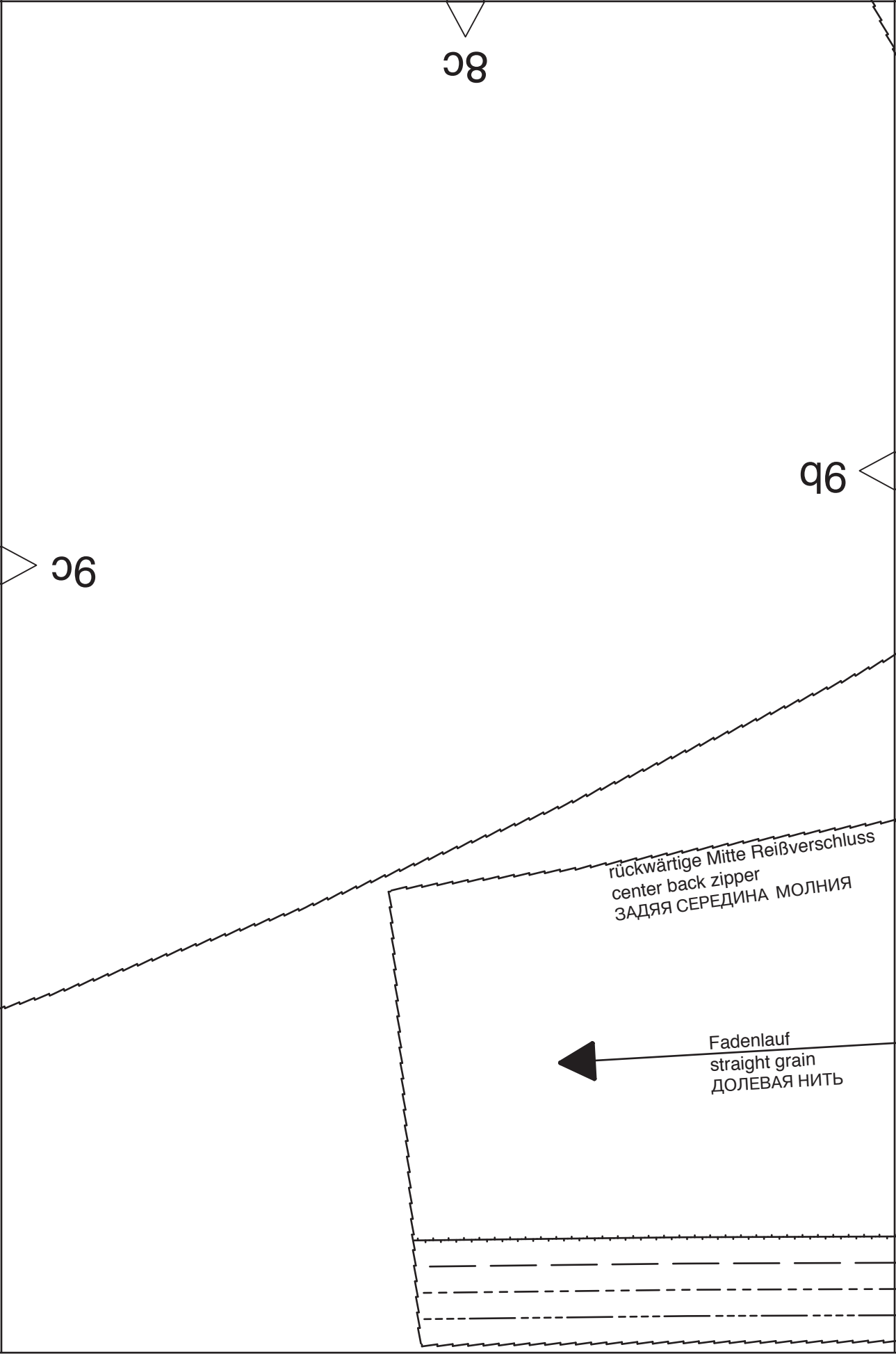
38

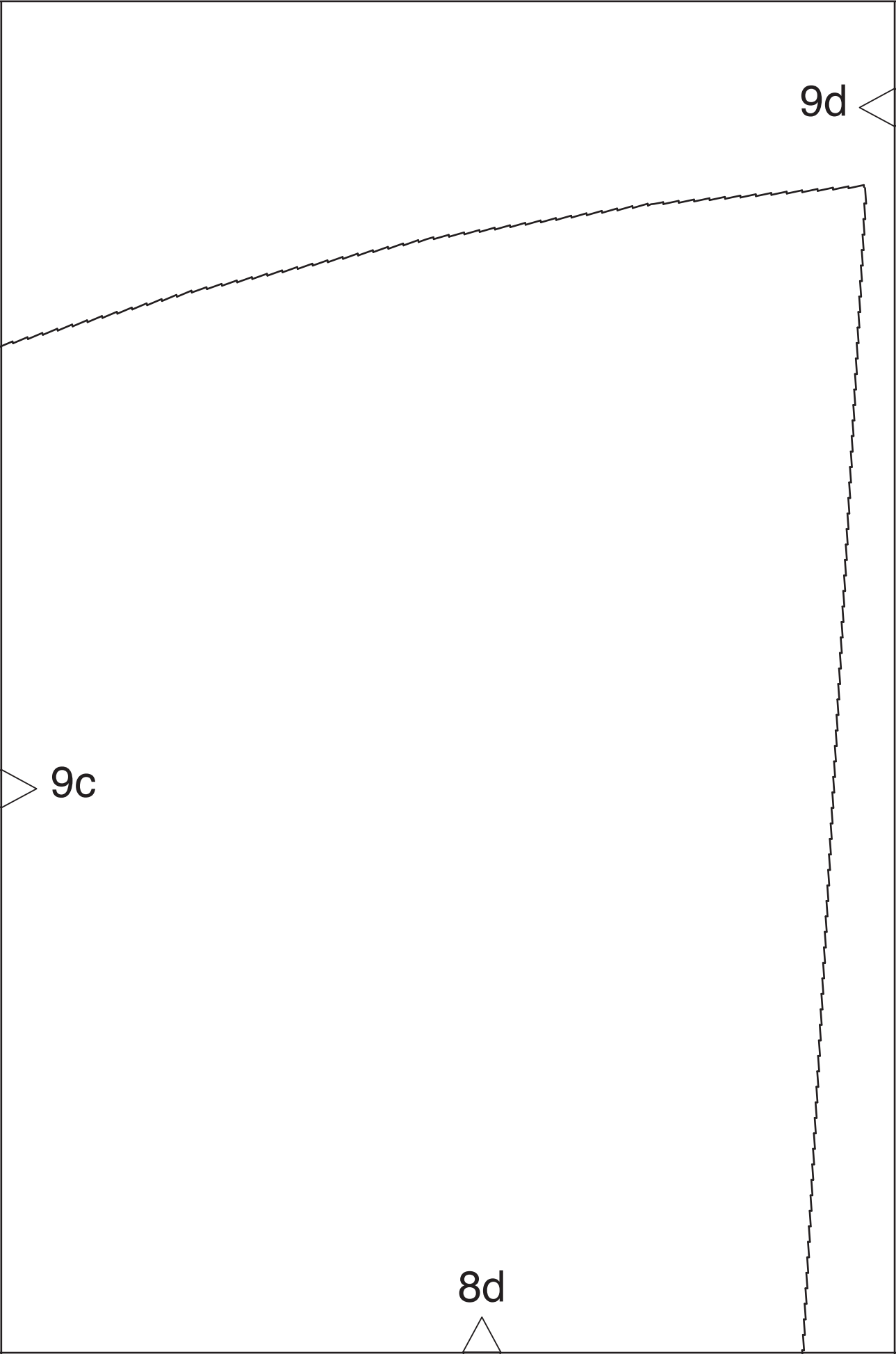
96

36

rückwärtige Mitte Reißverschluss  
center back zipper  
ЗАДНЯЯ СЕРЕДИНА МОЛНИЯ

Fadenlauf  
straight grain  
ДОЛЕВАЯ НИТЬ





9d

Fadenlauf  
straight grain  
ДОЛЕВАЯ НИТЬ

9e

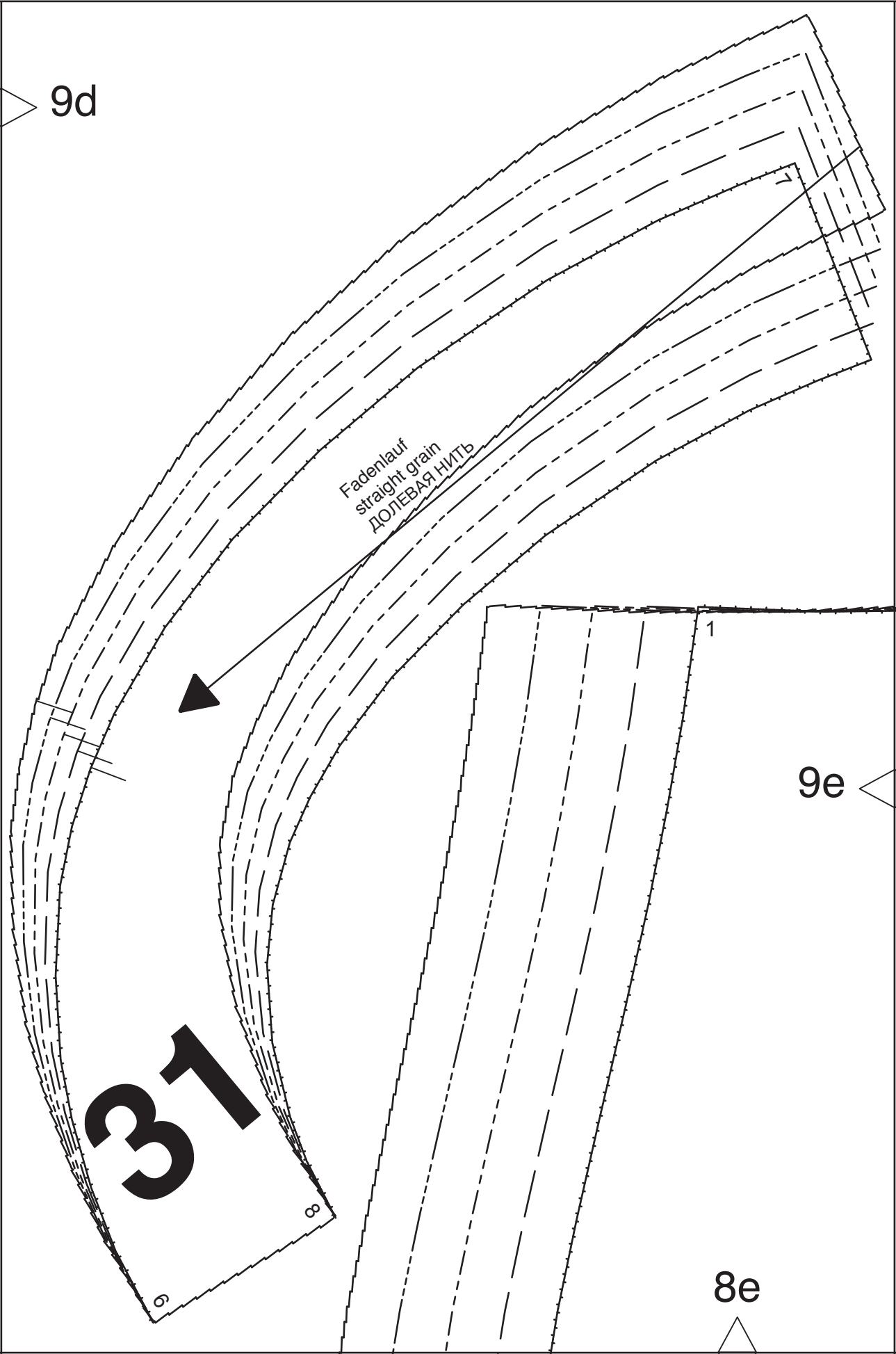
8e

31

6

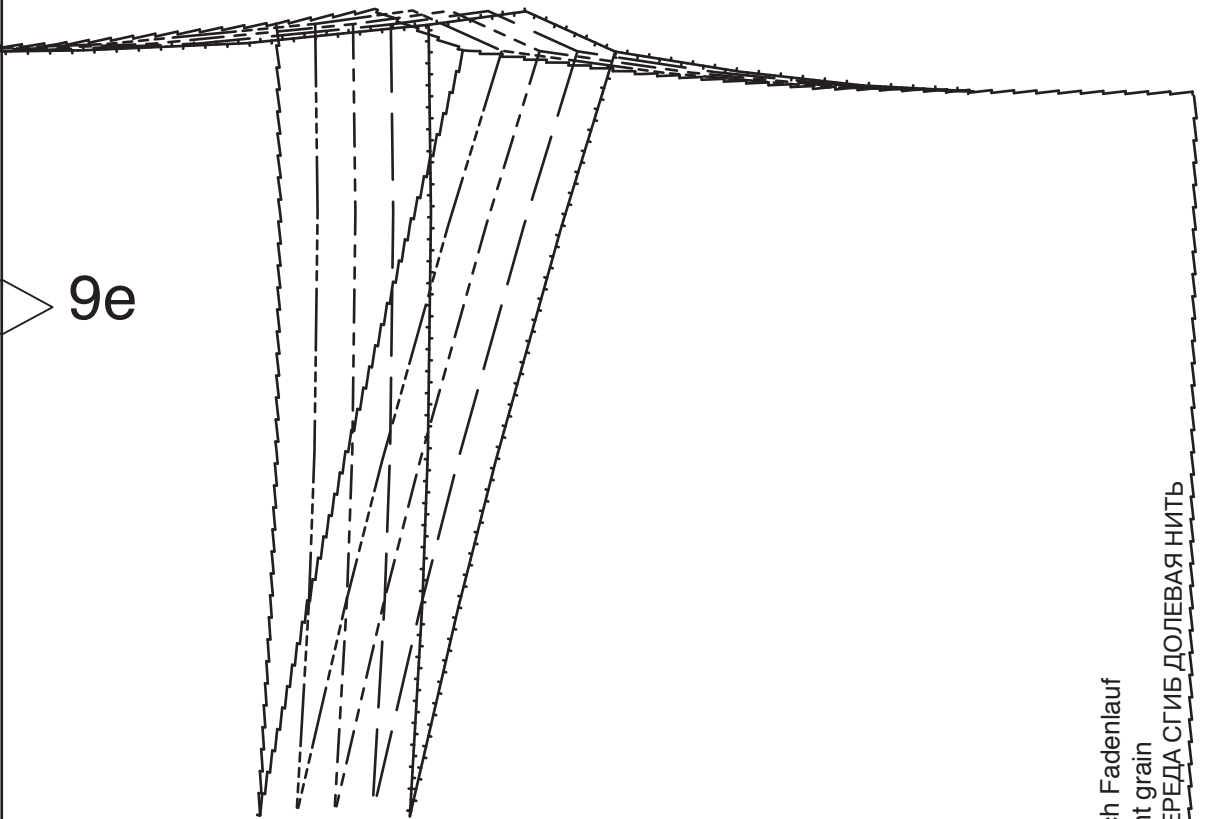
8

1



Kontrollquadrat / test square

Seitenlänge / side length  
10 cm (4 inches)



9e

8f

vordere Mitte Stoffbruch Fadenlauf  
center front fold straight grain  
ЛИНИЯ СЕРЕДИНЫ ПЕРЕДА СГИБ ДОЛЛЕВАЯ НИТЬ